

# How Intake Screening is Vital to Reducing Liability

Taylor D. Brewer  
Attorney  
Richmond, Virginia

# Disclosure and Disclaimer

I do not have any relevant financial relationships with any commercial interests.

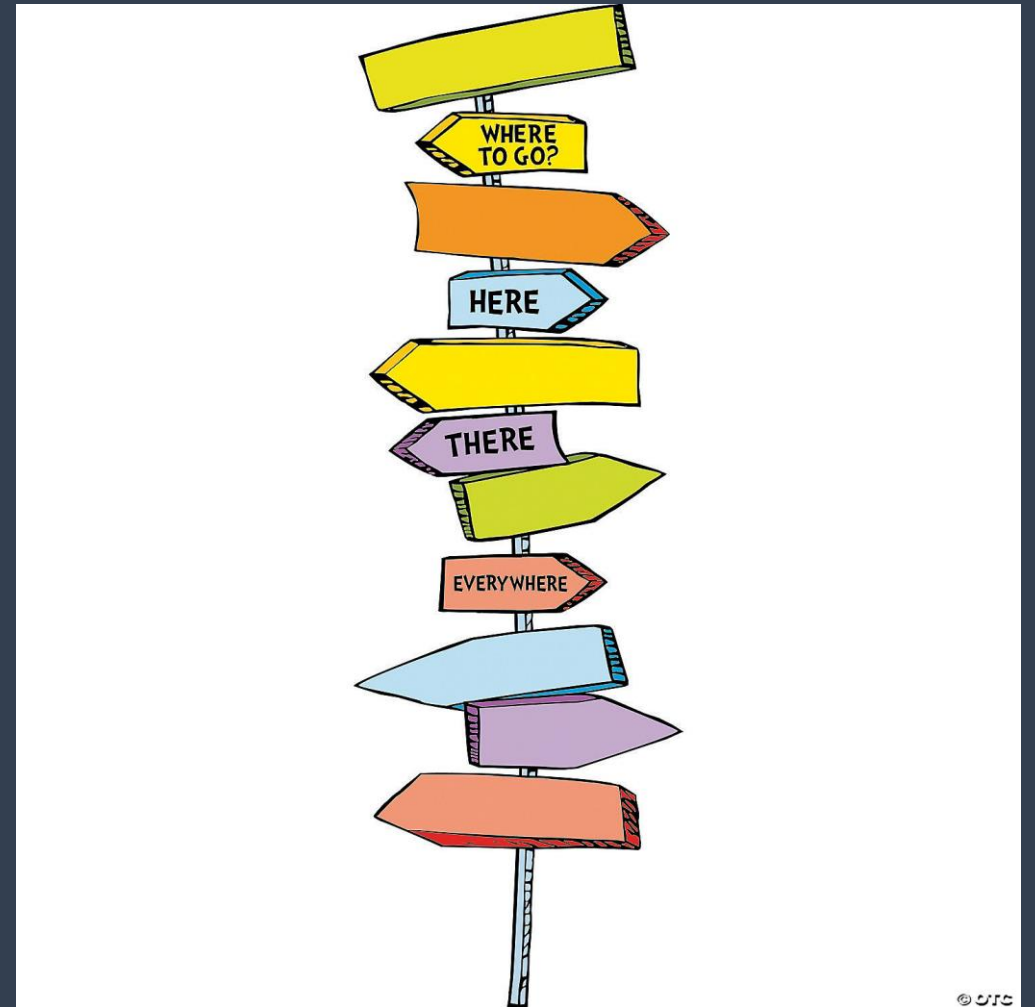
- **This informational presentation was developed by independent experts. The information provided in this presentation is not the official position or recommendation of NCCHC but rather expert opinion. This information is not intended to be appropriate for every clinical situation nor does it replace clinical judgment.**
- **NCCHC does not endorse or recommend any products or services recommended.**

# Educational Objectives

- Learning Objective 1: Recognize medical concerns at intake that require immediate intervention
- Learning Objective 2: Define disabilities and chronic conditions identified at intake that require, or may require, follow-up
- Learning Objective 3: Identify the aspects of intake that lead to risk and liability.

# Intake Screening: An Opportunity

- Highlights the unique patient-provider relationship
- Health care in custody is constitutionally required. Estelle v. Gamble (1976)



# Intake Screening: Nice to Meet You



- First impressions die hard.
- Bedside manner is important.
- Establish rapport
- Invite conversation
- Primacy/Recency

# Intake Screening: Interventions

“Although the central purpose of jails is to detain people who engage in criminal behavior and pose a threat to public safety, the poor health status and lack of regular care among justice-involved-individuals make the facilities a potentially important site for health care interventions.”

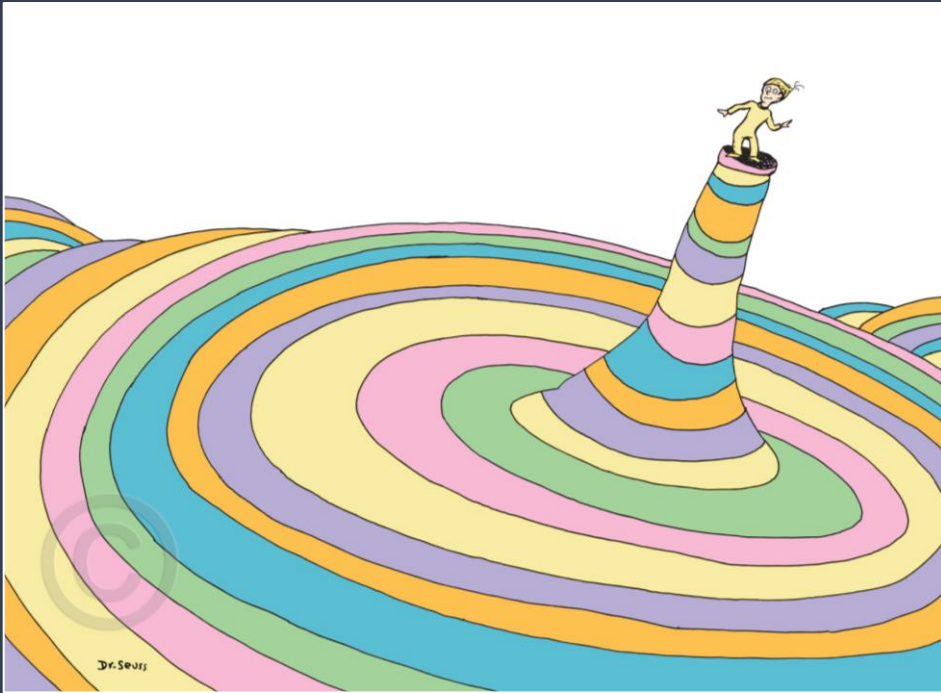
Jails: Inadvertent Health Care Providers. The Pew Charitable Trusts. (Jan 2018).

# Intake Screening: Chronic Conditions

- Hypertension
- Heart disease
- Diabetes
- Arthritis/pain
- Hepatitis C
- Pulmonary issues – COPD, asthma
- Depression



# Intake Screening: Withdrawal



- Acute v. chronic
- Physical space
- Correctional officers  $\neq$  health care providers
- COWS and vital signs

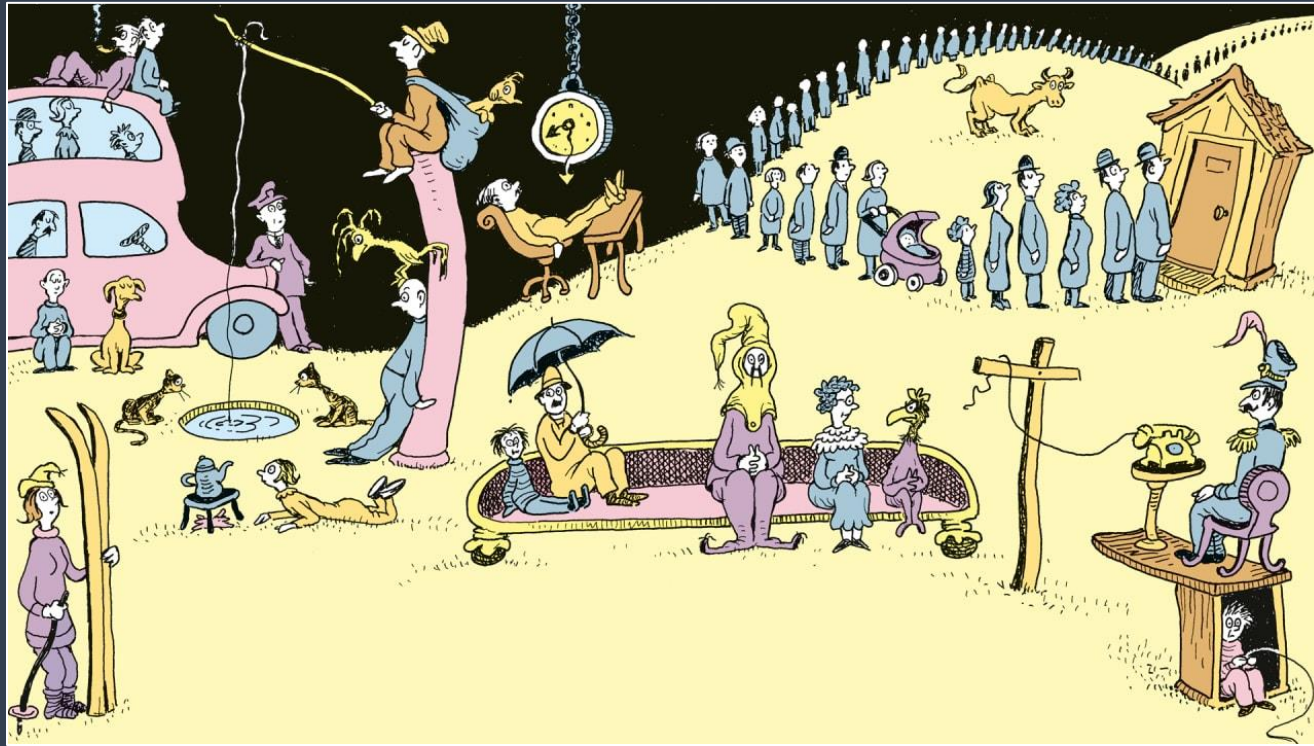


# Intake Screening: COVID-19

- Policies vary
- Immunity (?)
- COVID crash
- Document checks
- High risk inmates



# Intake Screening: Mental Health



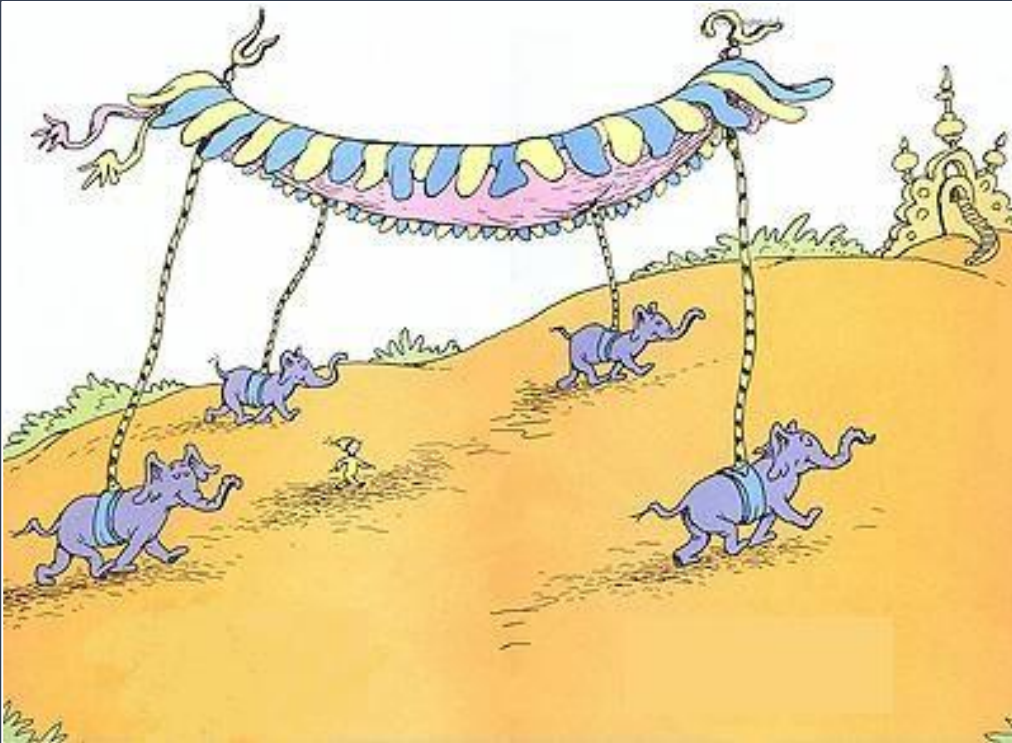
- Documentation
- Drug seeking behavior
- Boy who cried wolf
- Suicide
- Silent inmates

# Intake Screening: More is More

- Is there anything about your health we haven't talked about?
- Is there anything you'd like to share about your health that we haven't covered?



# Intake Screening: Return from Hospital/Outpatient Visit



- Taking report from discharging facility
- Hospital discharge does not obviate the need for facility exam
- Do not hesitate to send back.
- Advocate



# Intake Screening: Suitability for Housing

MEDICAL DISPOSITION OF PATIENT:	
1.	<div><input type="checkbox"/> Intake/Reception <input type="checkbox"/> Suitable for housing as deemed appropriate by security <input checked="" type="checkbox"/> Medical Observation Unit <input type="checkbox"/> Infirmary <input type="checkbox"/> Mental Health Referral <input type="checkbox"/> Medical Referral <input type="checkbox"/> Suicide Precautions <input type="checkbox"/> Off-site Medical Emergency Treatment</div>
Please indicate appropriate housing of patient:	

- Understand the physical processes
- Special needs
- Advocate

Special Needs - Special Needs

Housing Location: General Population

Special Needs: BB

Comments (Blank):

urse Initials:

>>>> ELECTRONIC SIGNATURE <<<<<:

Document

Document

Document

Document

Document

Document

Document

Document

Document

Document

Document

Document

Document

Document

Document

Document

Document

Document

Document

Document

Document

Document

# Questions?



# References

Estelle v. Gamble, 429 U.S. 97 (1976).

Rimondini, M., Mazzi, M., Martin, I. You only have one chance for a first impression! Impact of Patients' First Impression on the Global Quality Assessment of Doctors' Communication Approach. (2019).

Kratzke, I., Rosenbaum, M., and Cox, C., Effects of Clear vs. Standard Covered Masks on Communication with Patients During Surgical Clinic Encounters. (2021).

Jails: Inadvertent Health Care Providers. The Pew Charitable Trusts. (Jan 2018).

Maruschak, L., Berzofsky, M., and Unangst, J. Medical Problems of State and Federal Prisoners and Jail Inmates, U.S. Department of Justice, Special Report (Feb. 2015).

Staton, M., Leukefeld, C., and Webster, J. M. Substance use, health, and mental health: Problems and service utilization among incarcerated women. International Journal of Offender Therapy and Comparative Criminology, 47, 224–39 (2003).

World Health Organization. Clinical guidelines for withdrawal management and treatment of drug dependence in closed settings. (2009).

American Psychological Association. Incarceration nation. *Monitor on Psychology*. 2014;45(9):56.

Bronson, J., Berzofsky, M. Indicators of Mental Health Problems Reported by Prisoners and Jail Inmates, U.S. Department of Justice (June 2017);

Serious Mental Illness (SMI) Prevalence in Jails and Prisons. Office of Research & Public Affairs. Treatment Advocacy Center: Office of Research & Public Affairs. (Sept. 2016).